



COMPACT DESIGN
BIG PERFORMANCE

EN

GT5048



GIANT[®]
BY TOBROCO

WWW.TOBROCO-GIANT.COM



GT5048



With the GT5048 TOBROCO-GIANT has taken the design to the next level. The extensive knowledge of the 4548 TENDO and the latest technologies have been used to develop a modern telehandler in the 2x2 meter class. This means that the compact telehandler is only 1.9 meters high and 1.6 meters wide.

Compact design, big in performance



DISTINCTIVE POWER

The compact and versatile GT5048 is specially designed for working at height. Like all GIANT machines, the GT5048 will distinguish themselves by their lifting height and stability. The machine has a limited turning circle due to the four-wheel steering. This makes it easy to operate in small spaces or even indoors.

TOBROCO-GIANT has developed the GT5048 models entirely in-house. Only the best components have been chosen and tested extensively before they were applied to the machine. TOBROCO-GIANT works closely with quality suppliers like Bosch Rexroth, Comer, Kubota and Hydac during the development of new machines. For high reliability and maximum use of the machines, all components are extensively tested under harsh conditions. This results in proven reliability, low consumption costs and a high residual value.



TYPES	GT5048
Service weight *	2.950 kg
Lifting capacity	See graph (page 15)
Tipping load	See graph (page 15)
Lifting height	4.800 mm
Length without bucket	3.135 mm
Width	1.600 mm
Machine height	1.900 mm

* Measured with standard version and earthbucket.

STRONG PROPERTIES



- 1. WORKING COMFORTABLY** - A comfortable working environment has been created, therefore long working days are no problem.
- 2. WORK SAFELY** - The cabin and safety roof are ROPS/FOPS certified on international standard. The use of narrow styles and skylight gives the operator all-round visibility and an excellent view on his work to allow safe and precise operation.
- 3. EASY SERVICE** - Daily checks and maintenance can be carried out quickly and in a safe manner because service points are easily accessible.
- 4. POWERFUL PERFORMANCE** - The machines are driven by a powerful, 50 hp Kubota engine which provides powerful performance. The engine is equipped with a catalytic converter (DOC) and soot filter (DPF) and meets the latest EU Stage V clean engine standards.
- 5. COMPACT DESIGN** - The compact dimensions ensure that the machines can operate in small spaces and even can be used indoors.
- 6. MANOEUVRABILITY AND STABILITY** - The articulated pendulum swing system provides manoeuvrability and stability. Unevenness's are absorbed without any compromise to the performance.

- 7. PRODUCTIVITY** - The telehandler has hydrostatic all-wheel drive with automotive steering through 8-ton axles and a heavy planetary final drive, this always provides enough grip, a lot of pulling force for a smooth movement.
- 8. VERSATILITY** - Simply change the attachment and adapt the machine to your work. The GIANT attachments range consists of more than 200 different attachments, making the GT5048 always the right tool.
- 9. HYDRAULIC POSSIBILITIES** - The standard double-acting function at the front (mechanically operated) can easily be expanded with additional hydraulic functions.
- 10. SPEED** - With a travel speed of 25 km/h, the machines can move quickly to the next working area or transport materials in no time.
- 11. CHOOSE THE RIGHT MACHINE FOR YOU WORK** - The GT5048 can be configured completely according to your wishes.
- 12. SOLID INVESTMENT** - The GT5048 is a solid investment because of its reliability and high productivity. Only the best components have been chosen and tested extensively before they were applied.

SAFETY AND COMFORT



With a view to user-friendliness, a comfortable working environment has been created in the cabin so long working days are no problem. The steering column is fully adjustable and all necessary information can easily be read from a central display. The use of this steering column and a mechanical suspension seat also creates more space for the user. While using the joystick, the operator can rest his arm on an ergonomically shaped armrest. All key functions are close to the joystick so that they can be easily operated.



WORK SAFELY

Besides that, the safety roof and cabin are internationally ROPS/FOPS certified. All-round visibility gives the operator an excellent view on his work and allows safe and precise operation. The front window can even be equipped with a protective grid for extra protection.



ELECTRONIC CONTROL

Information about coolant regeneration, etc., can be read from the dashboard so that the driver can always see these important data during work.

360° all-round visibility from the cabin



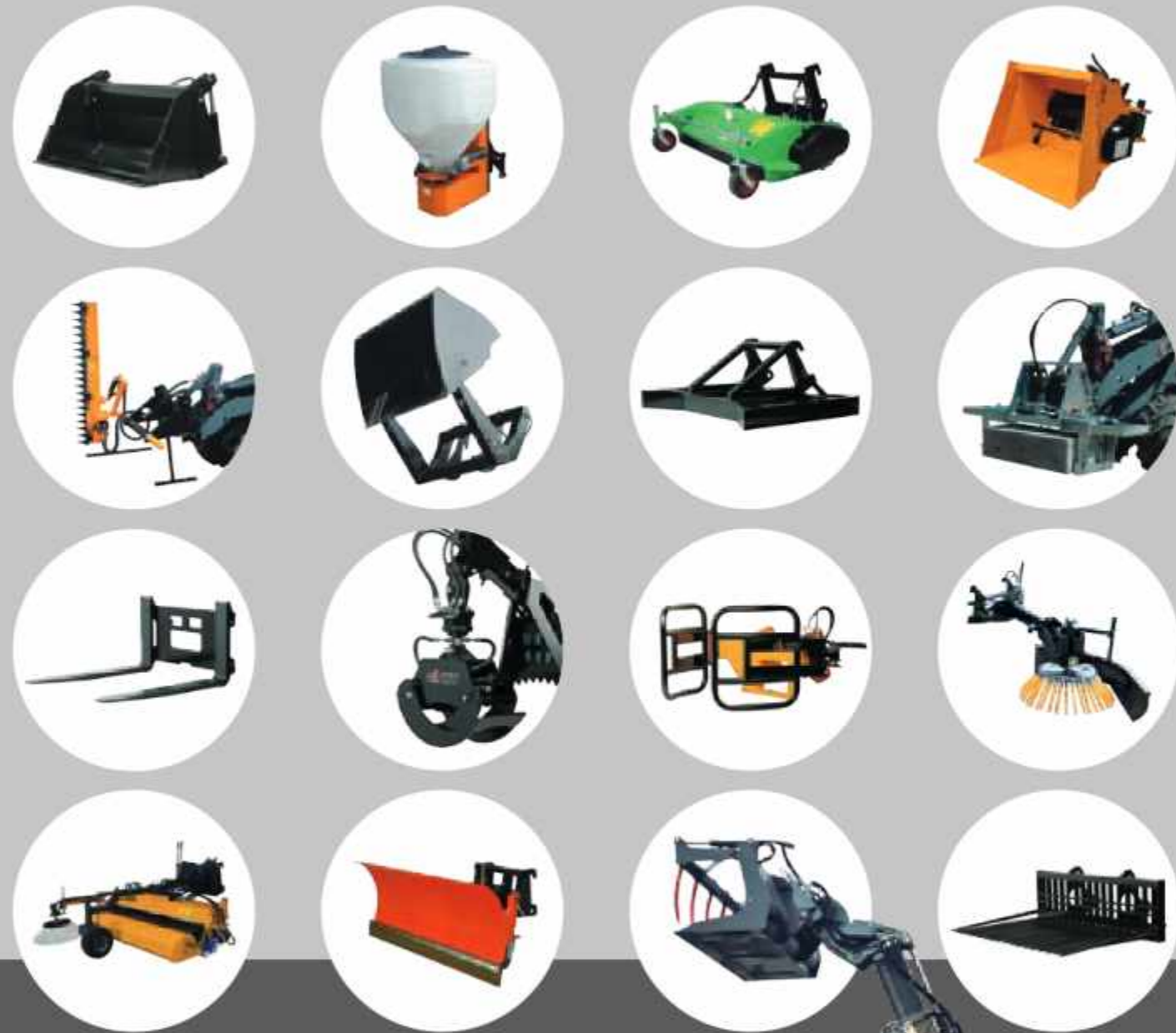
PROTECTIVE GRID

If the work requires it, it is possible to equip the windscreen of the GIANT GT5048 with a protective grille. This way the machine is extra protected and durability is guaranteed.

ATTACHMENTS

500+ attachments

Our attachments are developed entirely in-house so that they deliver the best results when working on our machines. TOBROCO-GIANT offers more than 500 different attachments so your machine can be used all year long. By choosing the right attachment it is possible to adjust your GIANT to working conditions for agricultural purposes, construction, material handling, private use and many other areas of application. Get every job done with just one machine!



HYDRAULIC QUICK COUPLER

The GT5048 is equipped with a hydraulic quick coupler as a standard. This makes it possible to change attachments safely and within seconds.

MOUNTING SYSTEMS

TOBROCO-GIANT offers a wide range of mounting systems, enabling you to use the attachment that you already have.



SECTORS

One machine for every job



TECHNICAL DATA

TYPE	GT5048
Service weight ¹	2,950 kg
Tipping load ²	585 kg - 2,490 kg
SIZE AND SPEED	
Lifting height ³	4,800 mm
Length without bucket	3,135 mm
Machine height ³	1,900 mm
Width on standard types	1,600 mm
Standard tyres	10.00/75-15.3 AS
Travel speed	0-7 km/h 0-25 km/h (with automatic gear)
ENGINE	
	Kubota D1803 CR DOC/DPF (STAGE V)
Cylinders	3
Power	50HP / 36 kW
Type	Diesel
Fuel tank capacity	38 l
Oil capacity	75 l
POWERTRAIN	
Type	Hydrostatic 4 wheel drive
Transmission	Automotive control
Differential	Four-wheel steering
Final drive	8 tons axles, heavy planetary end drive
Pulling force	22,600 N
Driving hydraulics	64 ltr/min (450 bar)
Working hydraulics	51 ltr/min (230 bar)
Parking brake	Disk brakes

STANDARD MACHINE FEATURES

TYPE	GT5048
GIANT standard hydraulic quick change system	Std
ROPS/FOPS safety roof incl. windows (front and right side) and windscreen wiper (front)	Std
Mechanically suspended seat incl. safety belt, armrest and extended backrest	Std
1x Double acting hydraulic function on lifting arm, mechanical	Std
Transportlock	Std
Hose rupture protection	Std
Proportional Load Moment Protection (EN 15000)	Std
Working light (halogen) front, on lifting arm	Std
Battery, 77 Ah	Std
Main switch	Std
Anti-theft protection with access code (not certified)	Std
Shunt coupling	Std
Oil cooler	Std
Cyclone filter	Std

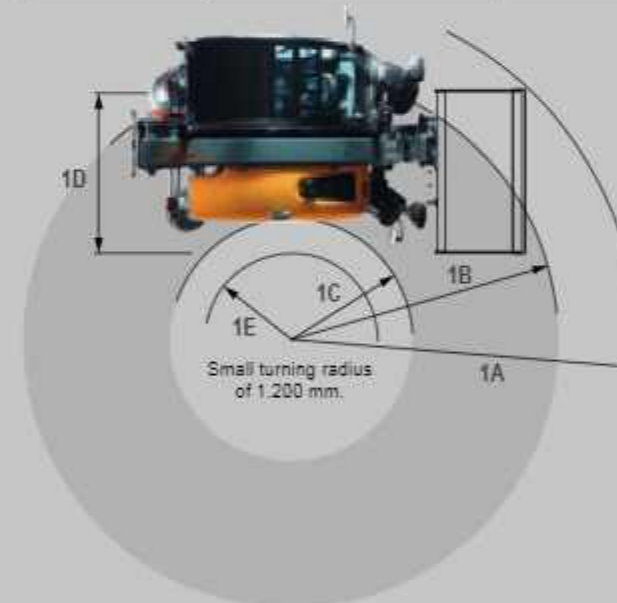
¹ Measured with earthbucket

² Measured with hinge point in straight position on standard tyres

³ Measured on standard tyres with safety roof

MEASUREMENTS

	Unit	GT5048
A Wheelbase	mm	1,950
B Total length till hitch	mm	2,750
C Total length (without bucket)	mm	3,135
D Total length (with bucket)	mm	3,850
E Diameter standard tire	ø mm	780
F Operating Distance for J	mm	550
G Seat top height	mm	950
H Max. height with cabin	mm	1,970
I Height frontframe	mm	1,270
J Dumping height	mm	4,100
K Stacking height	mm	4,800
L Max. height pivot	mm	4,800
M Max. height with bucket	mm	4,500
N Rollback angle (on the ground)	°	45
O Rollback angle at max. lifting height	°	51
P Dumping angle (max.)	°	33
1A Maximum radius with bucket	mm	3,400
1B Radius at the outer edge	mm	2,700
1C Turning radius	mm	1,200
1D Min. machine width	mm	1,600
1E Inside turning radius	mm	900



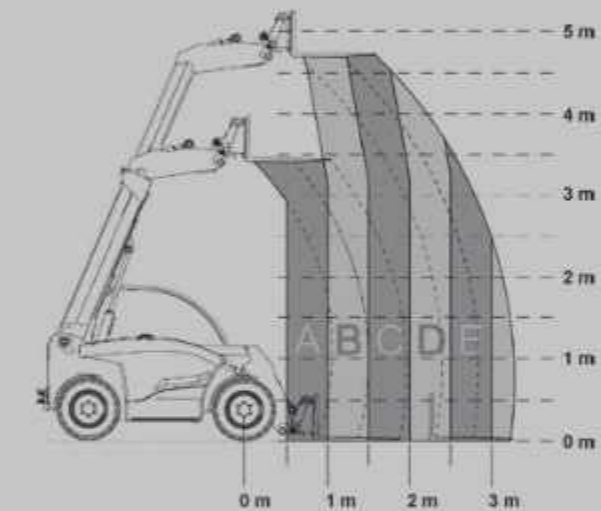
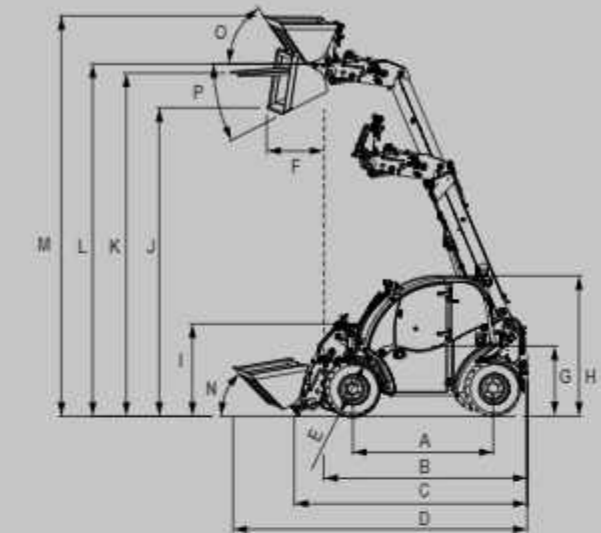
TWO-WHEEL STEERING
Drive steady and steer accurately.



FOUR-WHEEL STEERING
Highly maneuverable in smaller areas due to the small turning radius.



CRAB STEER
Drive with extreme precision and increase your maneuvering options.



TIPPING LOADS

	Standard version	With counterweight (option)
A	2,490 kg	2,870 kg
B	1,670 kg	1,925 kg
C	1,255 kg	1,445 kg
D	700 kg	855 kg
E	585 kg	710 kg

Measured with GIANT hitch. The above values may deviate for other types of hitches.

AVAILABLE OPTIONS

	GT5048
CABIN	
ROPS/FOPS Cabin incl. windows, windscreen wiper, heating, radio and speakers, safety door (L), 2 side mirrors, 2 working lights front, 1 working light rear, interior decoration	<input type="checkbox"/>
DAB+ radio and speakers with Bluetooth and USB 2.0 connection	<input type="checkbox"/>
Air conditioning incl. reversible fan	<input type="checkbox"/>
Camera monitor system (2 camera's (1 on extendable section lifting arm, 1 rear camera), 7" TFT display)	<input type="checkbox"/>
Air suspended seat incl. safety belt, armrest and extended backrest	<input type="checkbox"/>
Protective grille front window	<input type="checkbox"/>
Cabin mat	<input type="checkbox"/>
Mechanically suspended seat with seat heating incl. safety belt, armrest and extended backrest	<input type="checkbox"/>
Air suspended seat incl. safety belt, armrest and extended backrest	<input type="checkbox"/>
Side mirrors (L+R)	<input type="checkbox"/>
Side mirrors Large (L+R)	<input type="checkbox"/>
Air suspended seat with seat heating incl. safety belt, armrest and extended backrest	<input type="checkbox"/>
HYDRAULIK CONNECTIONS ON LIFTING ARM	
2x double acting hydraulic function (incl. standard function), mechanically controlled by 1 lever behind the joystick	<input type="checkbox"/>
1x double acting hydraulic function, electric/hydraulic controlled in joystick	<input type="checkbox"/>
2x double acting hydraulic function, electric/hydraulic controlled in joystick	<input type="checkbox"/>
2x double acting hydraulic function, electric/hydraulic controlled (proportional) in joystick	<input type="checkbox"/>
3x double acting hydraulic function, electric/hydraulic controlled (proportional) in joystick	<input type="checkbox"/>
Single- or double-side hydraulic hold on additional function	<input type="checkbox"/>
Leak oil connection	<input type="checkbox"/>
Free hydraulic return	<input type="checkbox"/>
HYDRAULIK CONNECTIONS AT THE BACK OF THE MACHINE	
1x double acting hydraulic function, mechanical	<input type="checkbox"/>
Leak oil connection	<input type="checkbox"/>
Free hydraulic return	<input type="checkbox"/>
Three point lifting mechanism (Cat. 2)	<input type="checkbox"/>
ELECTRICAL / LIGHTING	
Switched 12 Volt socket, 3-pin (max. 2) (Possible on lifting arm, at the back of machine or in cabin)	<input type="checkbox"/>
13-pin trailer socket to the back (only possible in combination with traffic lights)	<input type="checkbox"/>
1x Working light (LED) front, on lifting arm	<input type="checkbox"/>
Flashing/warning light (halogen or LED)	<input type="checkbox"/>
Battery, 100 Ah	<input type="checkbox"/>
Engine heater (Coolant) 110V or 220V	<input type="checkbox"/>
Traffic lights (halogen or LED)	<input type="checkbox"/>
Licence plate holder with illumination (only possible in combination with traffic lights)	<input type="checkbox"/>
OTHER OPTIONS	
Machine sprayed in RAL company colour	<input type="checkbox"/>
Hand throttle	<input type="checkbox"/>
Reversible fan	<input type="checkbox"/>
Two-wheel, four-wheel and crab steering	<input type="checkbox"/>
100% electrical differential lock on front axle	<input type="checkbox"/>
Back-up alarm (acoustic)	<input type="checkbox"/>
Jump start	<input type="checkbox"/>
Different hitch	<input type="checkbox"/>
Document box	<input type="checkbox"/>
Panolin HLP Synth 46 biodegradable hydraulic fluid	<input type="checkbox"/>
Shunt coupling (standard) + Tow ball	<input type="checkbox"/>
Towing hitch, automatic (top hitch)	<input type="checkbox"/>
Towing hitch, automatic (bottom hitch)	<input type="checkbox"/>
Towbar mirror	<input type="checkbox"/>
Road specification (ask your dealer for details)	<input type="checkbox"/>

MAINTENANCE & SERVICE

MAINTENANCE



Performing maintenance to the GT5048 is no problem at all because the service points are easy to reach. Filters, hydraulic system and engine can be freely accessed via the easy-to-open bonnet, tilting cab or other service panels. This ensures that daily checks and maintenance can be carried out quickly and in a safe manner.

GENUINE GIANT PARTS



The usage of genuine GIANT parts ensures reliable, efficient and safe operation of your machine. We only use the best quality components and test them severely before we introduce a new model. All these parts are vital for the best possible performance and minimising downtime. Keeping your GIANT 100% original saves money for the owner because of reduced maintenance costs and results in a higher resale value once the machine is resold.

SERVICE & SUPPORT



At TOBROCO-GIANT we offer support, service and high quality parts to protect the investment that you have made in GIANT machinery. Together with our dealers we are available to make sure that your machine performs in the best possible way. This increases your productivity and will result in an even better return on your investment.

TRAINING



At TOBROCO-GIANT we know all the details about our machines. That is why we offer an extensive training program to our dealers. Not only on the newest features or attachments, but also on how to service a machine to the highest standards.